



Intellicorp - LiveModel

Bring your business processes to life

What UCS offers:

- **Integrated Service Management**

The hub of our business. Service delivery management and a 24 x 7 Customer Contact Centre

- **Managed Services**

A broad portfolio of application and infrastructure services

- **Business Solutions**

Customised solutions for better business performance

"The entire project took 21 days, which was at least five times faster than if we had done it manually."

Aligning People, Processes and Technology

In many organizations the lack of process documentation is a liability. Instead of viewing business processes as tangible assets, companies are hampered by processes that are not communicated or maintained effectively. Ineffective process management can lead to a breakdown of communication across the business.

Technology can help in the identification, capture, and continuous management of business processes. With LiveModel™, IntelliCorp provides a web-based collaborative environment backed by a scalable enterprise repository for effective business process management. Use LiveModel to create, modify, view and compare models that represent your business processes. Ease of installation and minimal training enables users to quickly take control of business process assets.

LiveModel Key Facts:

- Effective and efficient communication between the business and IT
- Automatic Reverse Engineering of live SAP environments
- Key 3rd party product integrations, including SAP(R) Solution Manager, Microsoft SharePoint and HP Quality Center
- Includes SAP reference model content
- SAP Certified

How can LiveModel help me? I am looking for a tool that can...

Provide full Business Process Modeling capabilities

LiveModel enables effective communication and integration of people, processes and systems. Use LiveModel to manage business processes in single- and multi-instance SAP landscapes and ensure better quality control across the business.

Document my SAP processes

Use LiveModel to automatically capture which processes are being used and identify areas for process improvement.

Populate Solution Manager with Business Process Content

Want to benefit from the full functionality of SAP® Solution Manager but have no way to populate the blueprint? This can be achieved using LiveModel—in less than one day.

Make business process testing easier

LiveModel integrates with SAP Solution Manager, HP Quality Center and Microsoft SharePoint to automatically update content.

Leverage content stored in diagramming tools

Drive business integration and communication by converting Microsoft Visio diagrams into scalable models.

Audit and continuously monitor business processes

Use LiveModel to keep track of all business processes and owners to identify areas for improvement and reduce risk to the business.

Capture our AS-IS environment

Use LiveModel to understand how your SAP system is being used to drive consolidation and upgrade projects and visualize the process impact of support packs and custom developments.

Manage global vs. local business processes

Use LiveModel to identify and understand the differences between local SAP implementations in global SAP environments.

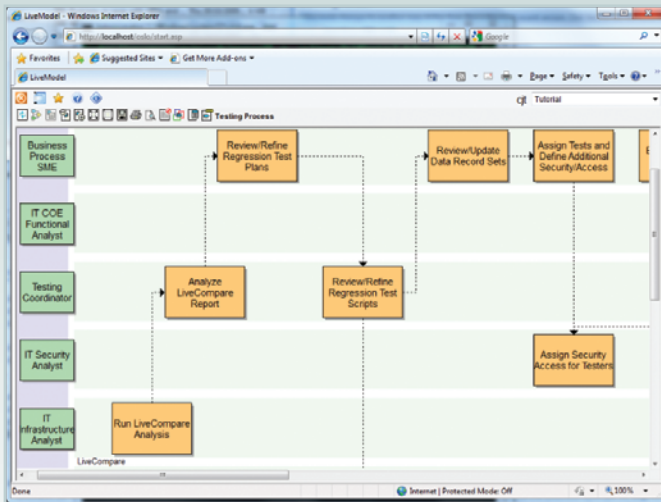
Why LiveModel?

- Ease of installation, set-up and use
- Inexpensive and visible ROI
- Minimal training required
- Unique, SAP certified, two-way integration with SAP Solution Manager
- Global/local process modelling ensures complete business visibility
- Integrate with IntelliCorp's LiveCompare for intelligent lifecycle optimization

"IntelliCorp's approach and tools provided an effective way of documenting the processes with minimum manual effort."

Key Benefits

- Easy to use, intuitive Business Process Modeling Tool
- Eliminate manual input and manual analysis
- Better manage risk and improve regulatory and SOX compliance
- Support new business functionality
- Live data ensures 100% accuracy
- Easy maintenance through automated updates



Who Should be Interested in LiveModel?

- CEOs who want better process management to lower business costs, increase revenue, motivate employees and improve customer satisfaction
- CIOs and IT Directors who want tighter control over IT with better risk management, higher quality and a reduction in cost
- Business Process Owners/Analysts who need better visibility of their business process design
- SAP Testers who want to save time in the creation and maintenance of test scripts

About IntelliCorp

IntelliCorp's suite of intelligent lifecycle optimization products are used by 35% of the Fortune 500 companies to cut TCO by at least 30%. LiveCompare, LiveModel and LiveInterface are SAP certified

FAQs

• Is LiveModel certified by SAP?

Yes. LiveModel is SAP Certified and marked as Solution Manager ready.

• How much effort is required to get LiveModel up and running?

It takes less than one hour to install and set-up LiveModel. LiveModel is a web based tool and can be accessed through a web browser anywhere, anytime.

• Will I need lots of training?

No. If you've built a process flow diagram in Microsoft Visio you'll be able to use LiveModel. Training is available and takes no more than one day.

• Do I need Solution Manager implemented before using LiveModel?

No, LiveModel runs standalone but will integrate with Solution Manager where available.

• Will keeping the model up-to-date be a headache?

No, integration between SAP and LiveModel enables continuous updating to check that models are up to date and processes adhered to.

• Can I provide high-level views to the business?

Yes. Consistent views of processes enables senior management, process owners and users to easily understand models.

• How easy is it to include custom processes?

LiveModel includes all the tools you need to document custom processes. Use LiveCompare and LiveModel to automatically discover and reverse engineer custom process implementations.



Cape Town: +27 (0) 21 680 4000
 Durban: +27 (0) 31 267 6230
 Johannesburg: +27 (0) 11 518 9000
 Email: sales@ucs-solutions.co.za

www.ucs-solutions.co.za